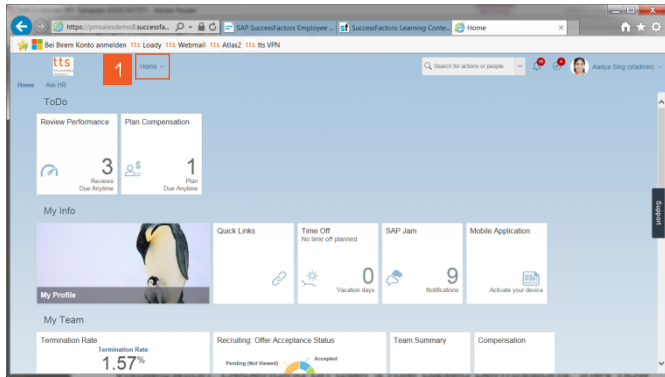
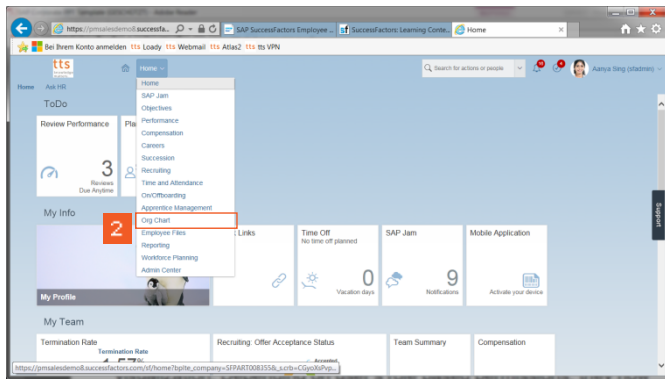


Home - Internet Explorer

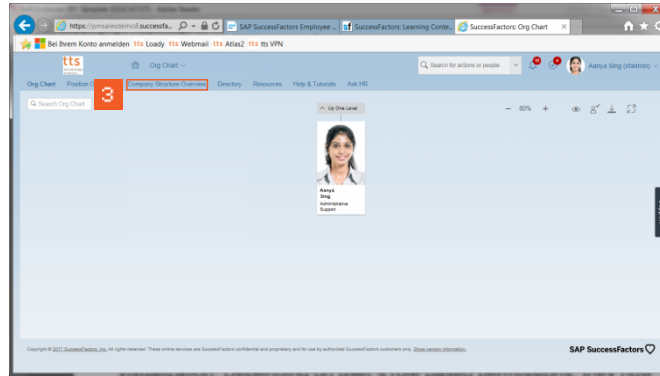


» 1 Click **Home**



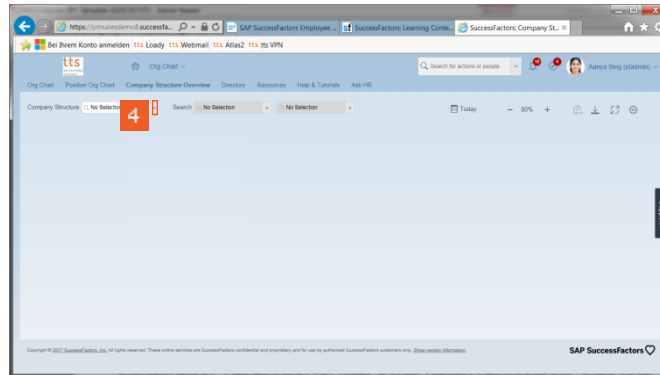
» 2 Click **Org Chart**

SuccessFactors: Org Chart - Internet Explorer

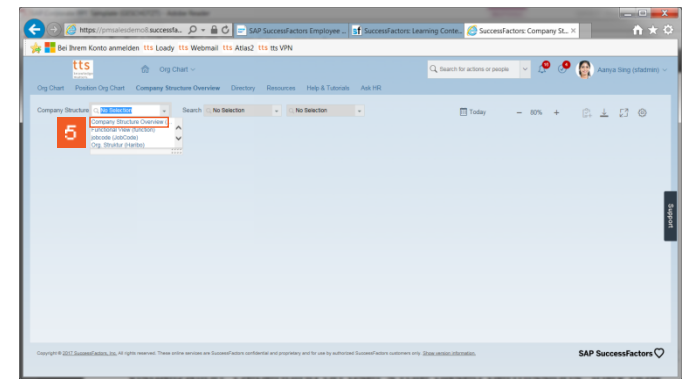


» 3 Click the **Company Structure Overview** hyperlink.

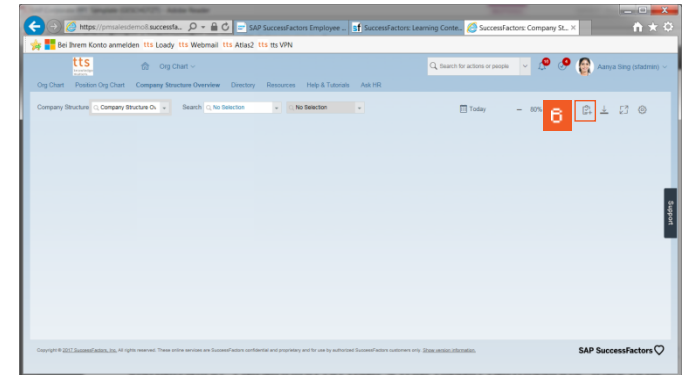
SuccessFactors: Company Structure Overview - Internet Explorer



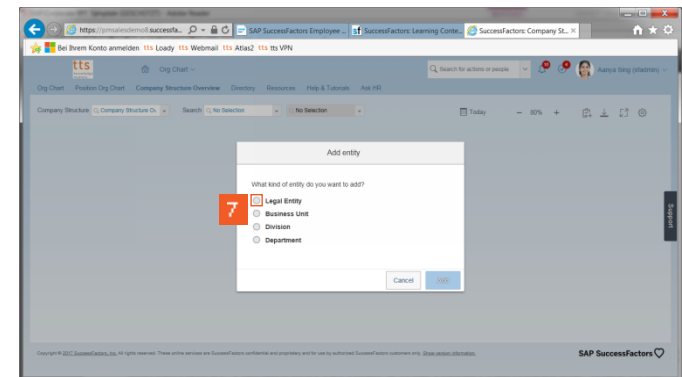
» 4 Click the **arrow** of the Company Structure Drop Down Menu.



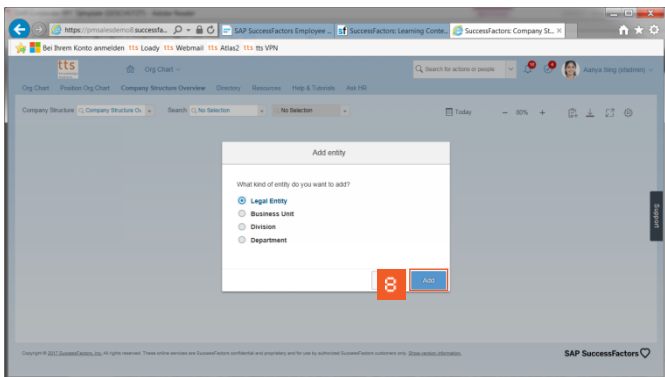
» 5 Click the **Company Structure Overview (Standard)** menu item.




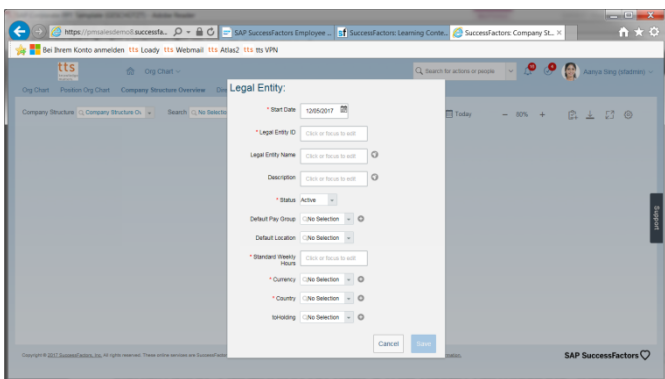
» 6 Click the **Add entity** icon.




» 7 Click the **Legal Entity** hyperlink.



>>  Click the **Add** button.



>>  Fill in the information for the child-entity and then click save.